

immagina
Notte

immagina
giorno

immagina
Notte

FINITURE 2022
FINISHING 2022
FINITIONS 2022

pag. 2-7

ARMADIATURE BATTENTI
WARDROBES WITH HINGED DOORS
ARMOIRES AVEC PORTES BATTANTES

pag. 8-9

ARMADIATURE SCORREVOLI
WARDROBES WITH SLIDING DOORS
ARMOIRES AVEC PORTES COULISSANTES

pag. 10-11

CABINA "OPEN-SPACE"
WALK-IN CLOSET
DRESSING

pag. 12-13

CABINA "ALL-IN-ONE"
WALK-IN CLOSET
DRESSING

pag. 12-13

LETTI
BEDSIDE CABINETS
ARMOIRES DE CHEVET

pag. 14-15

GRUPPI LETTO
BEDSIDE CABINETS
ARMOIRES DE CHEVET

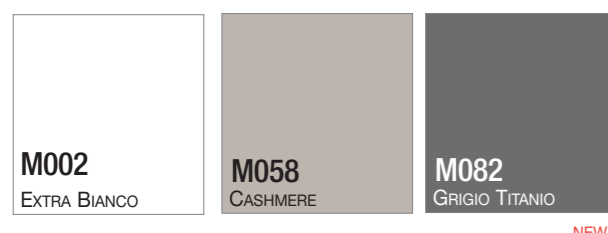
pag. 16-17

immagina
giorno

CONTENITORI e INTERPARETE
CONTAINERS WITH BOOKCASES
CONTENEURS ET BIBLIOTHÈQUES

pag. 12-13

DECORATIVI TINTA UNITA
SOLID COLOR DECORATIVES
DÉCORATIFS TEINTE UNIE



NEW

DECORATIVI SERIE SPECIALE
SPECIAL TYPE DECORATIVES
MÉLAMINÉES SÉRIE SPÉCIALE



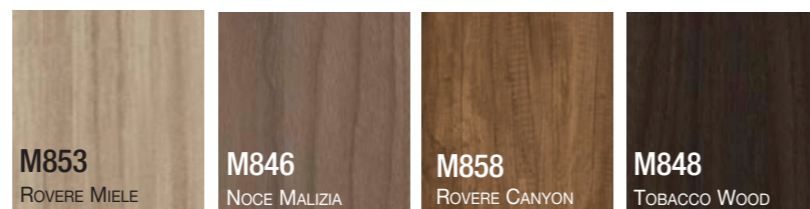
M864
ACERO FOSSILE

PREZZI: UTILIZZARE CAT. "LACCATO OPACO"
RIF. PANNELLO AL MQ. CAT. "LACCATO OPACO"

PRICES: SEE "MATT LACQUERED"
PER SQM. PANEL: SEE "MATT LACQUERED"

PRIX: VOIR "LAQUÉE MAT"
PANNEAU AU MQ.: VOIR "LAQUÉE MAT"

DECORATIVI ESSENZA
WOOD-TYPE DECORATIVES
MÉLAMINÉES IMITATION DE BOIS



NEW



M810
POLAR WHITE

M415
JUTA LAND

NEW

△ DISPONIBILE FINO AD ESAURIMENTO SCORTE.
CHIEDERE IN AZIENDA PER DISPONIBILITÀ.

AVAILABLE WHILE STOCKS LAST.
ASK FOR AVAILABILITY.

DISPONIBLE JUSQU'À ÉPUISEMENT DES STOCKS.
DEMANDER LA DISPONIBILITÉ.

LACCATO OPACO GOFFRATO FINE / LACCATO LUCIDO SPAZZOLATO
MATT EMBOSSED LACQUER / GLOSSY LACQUER
LAQUÉ MAT GAUFRÉ FIN / LAQUÉ BRILLANT



CAT. A

CAT. A

CAT. A

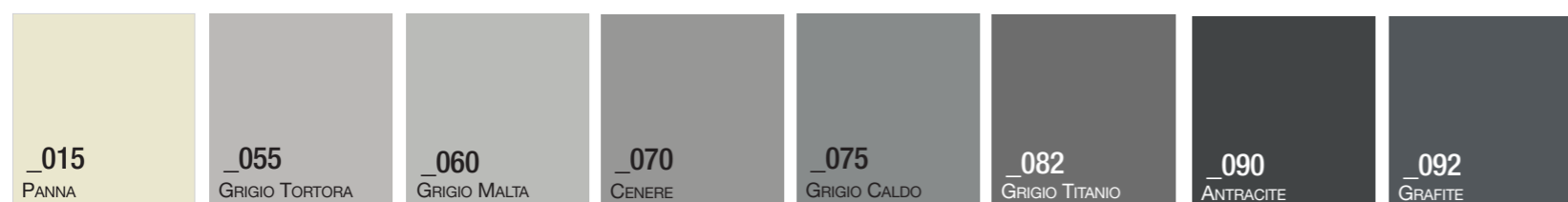
CAT. A

CAT. A

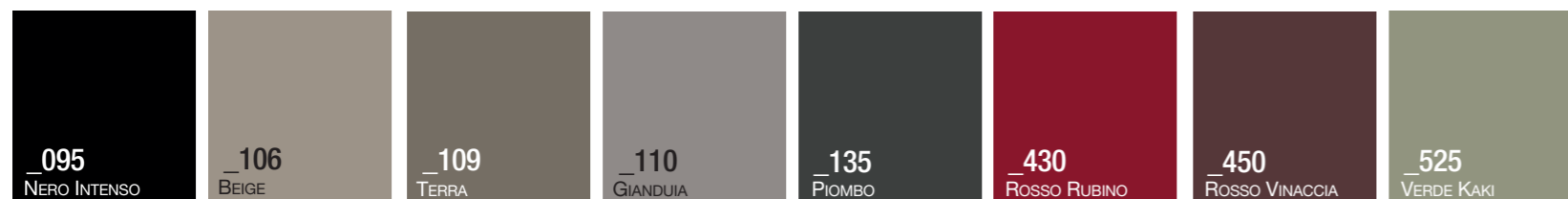
CAT. A:
QUESTE TINTE, NELLA FINITURA LACCATO OPACO,
SONO PROPOSTE CON PREZZO PROMOZIONALE

THESE COULEURS, IN THE MATT LACQUER FINISH ARE OFFERED
WITH A PROMOTIONAL PRICE

CES COULEURS, DANS LA FINITION LAQUÉ MAT,
SONT OFFERTS AVEC UN PRIX PROMOTIONNEL



NEW



COLORI RAL/NCS *

* COLORI A CAMPIONE DA MAZZETTA RAL/NCS
- CON MAGGIORAZIONE VEDI LISTINO SEZIONE "TAGLI E MAGGIORAZIONI"
SAMPLE COLOURS FROM RAL/NCS COLOUR CHART
- WITH SURCHARGE SEE PRICE LIST SECTION "CUTS AND SURCHARGES"
ÉCHANTILLONS DE COULEURS DU NUANCIER RAL/NCS
- AVEC SUPPLÉMENT VOIR LISTE DE PRIX SECTION "COUPES ET SUPPLÉMENTS"

METALLIZZATI OPACHI
MATT METALLIZED
MÉTALLISÉES MAT



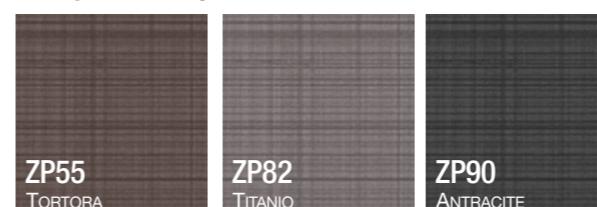
PREZZI: UTILIZZARE CAT. "LACCATO OPACO"
RIF. PANNELLO AL MQ. CAT. "LACCATO OPACO"

PRICES: SEE "MATT LACQUERED"
PER SQM. PANEL: SEE "MATT LACQUERED"

PRIX: VOIR "LAQUÉE MAT"
PANNEAU AU MQ.: VOIR "LAQUÉE MAT"

SPACE LAC
"SPACE LAC" FINISHES
FINITIONS "SPACE LAC"

FINITURA PENELOPE

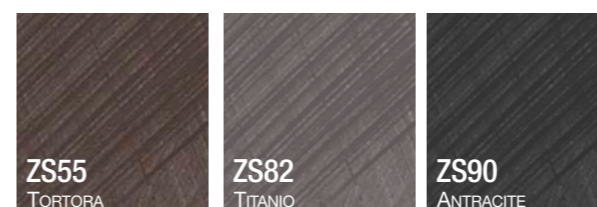


NEW

NEW

NEW

FINITURA SPAZZOLATO

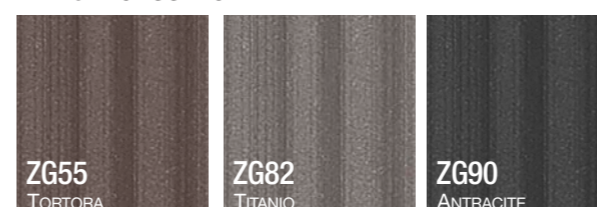


NEW

NEW

NEW

FINITURA GESSATO

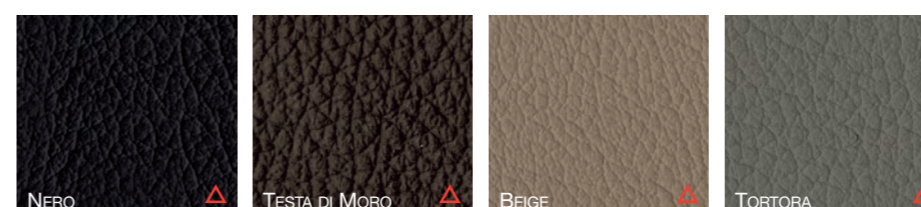


NEW

NEW

NEW

ECOPELLI
ECO-LEATHER
ECO-CUIR



△ DISPONIBILE FINO AD ESAURIMENTO SCORTE.
CHIEDERE IN AZIENDA PER DISPONIBILITÀ.

AVAILABLE WHILE STOCKS LAST.
ASK FOR AVAILABILITY.

DISPONIBLE JUSQU'À ÉPUISEMENT DES STOCKS.
DEMANDER LA DISPONIBILITÉ.

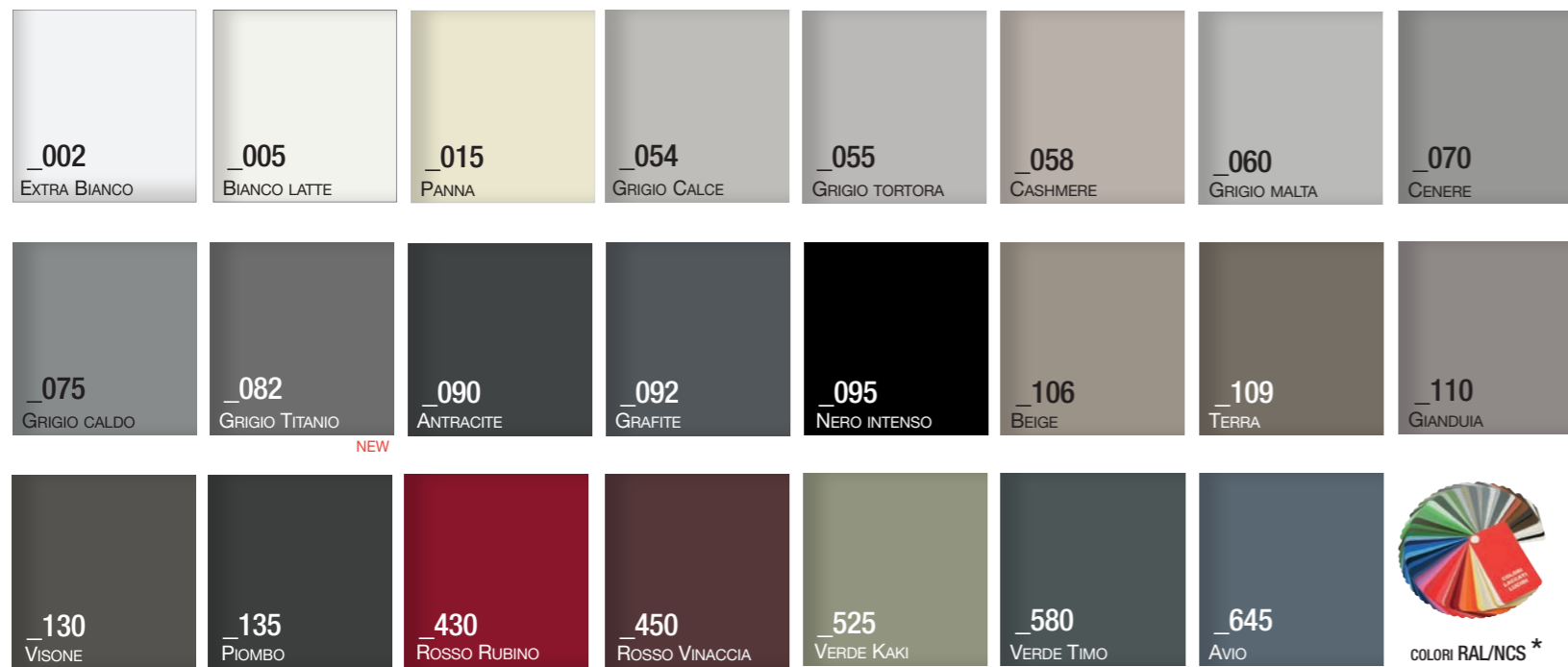
PREZZI: UTILIZZARE CAT. "SPACE LAC". RIF. PANNELLO AL MQ. CAT. "SPACE LAC"

PRICES: SEE "SPACE LAC" LACQUERED. PER SQM. PANEL: SEE "SPACE LAC" LACQUERED
PRIX: VOIR LAQUÉE "SPACE LAC". PANNEAU AU MQ.: VOIR LAQUÉE "SPACE LAC"

**QUALORA CI SIANO ARTICOLI CON FINITURE PER I QUALI NON SONO PREVISTI PREZZI A LISTINO,
UTILIZZARE IL PREZZO A MQ. DELLA FINITURA DESIDERATA**

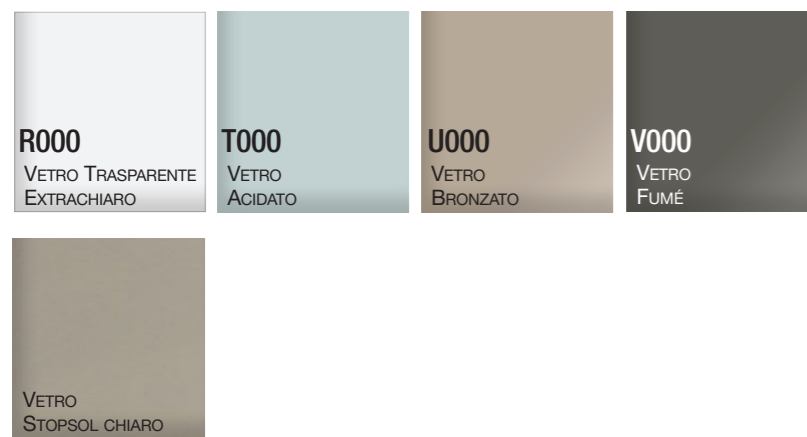
IF THERE ARE ITEMS WITH FINISHES FOR WHICH THERE ARE NO PRICES IN OUR PRICE LISTS, PLEASE USE THE PRICE PER SQUARE METER, OF THE DESIRED FINISH
SI VOUS NÉCESSITEZ DES ARTICLES AVEC DES FINITIONS POUR LESQUELS IL N'Y A PAS DE PRIX, VOUS POUVEZ UTILISER LE PRIX AU MÈTRE CARRÉ DE LA FINITION DÉSIRÉE

VETRI LACCATI
LACQUERED GLASSES
VERRES LAQUÉE

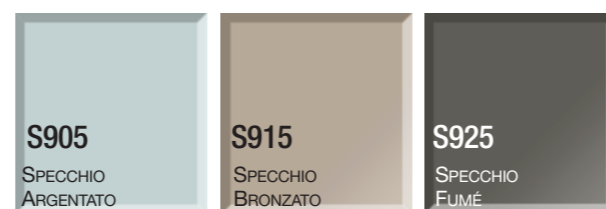


* COLORI A CAMPIONE DA MAZZETTA RAL/NCS - CON MAGGIORAZIONE VEDI LISTINO SEZIONE "TAGLI E MAGGIORAZIONI"
SAMPLE COLOURS FROM RAL/NCS COLOUR CHART - WITH SURCHARGE SEE PRICE LIST SECTION "CUTS AND SURCHARGES"
ÉCHANTILLONS DE COULEURS DU NUANCIER RAL/NCS - AVEC SUPPLÉMENT VOIR LISTE DE PRIX SECTION "COUPES ET SUPPLÉMENTS"

VETRI TEMPERATI
TEMPERED GLASSES
VERRES TREMPÉE

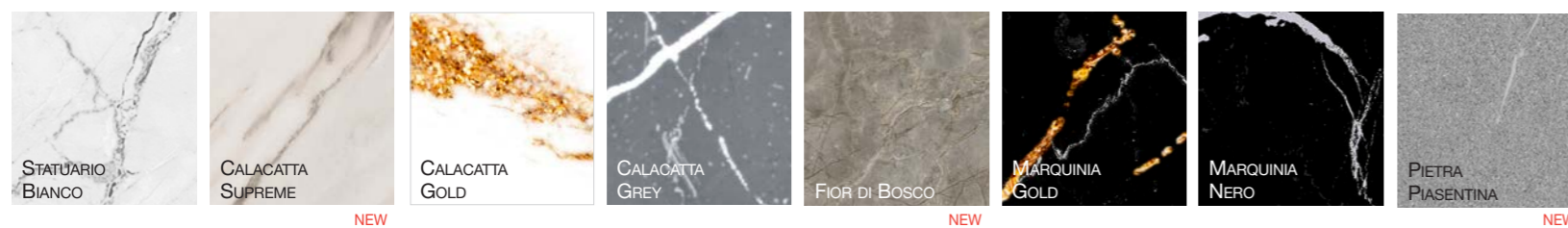


VETRI SPECCHIO
MIRROR GLASSES
VERRES MIROIR



IMMAGINA GIORNO: MOD.RIFLESSI CON ANTE VETRO A SPECCHIO:
UTILIZZARE IL PREZZO DELLA CATEGORIA "VETRO LACCATO"
IMMAGINA GIORNO: MOD.RIFLESSI WITH MIRROR GLASSES DOORS:
SEE "LACQUERED GLASS" PRICES
IMMAGINA GIORNO: MOD.RIFLESSI AVEC PORTES VERRE MIROIR:
VOIR PRIX "VERRE LAQUÉE"

VETRI EFFETTO MARMO / PIETRA
GLASSES WITH MARBLE / STONE EFFECT



I colori e le finiture qui riportati devono ritenersi puramente indicativi. Per una visione realistica consultare il nostro campionario colori.

Colours and finishings shown here are merely indicative. Please see our colour samples book for a more realistic image. - Les coloris et les finitions sont présentés à titre purement indicatif. Pour un rendu réel, consulter notre échantillon.

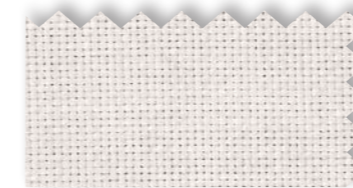
TESSUTI
FABRICS
TISSUS

Categoria - Category

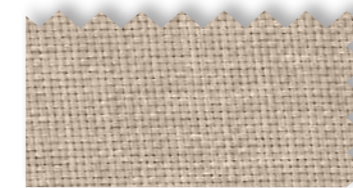
A

GEO

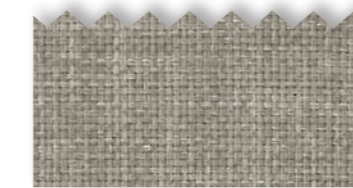
100%PL - IDROREPELENTE



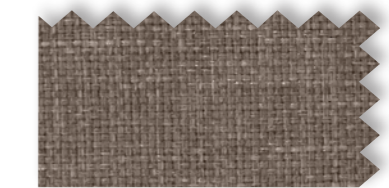
FA 134



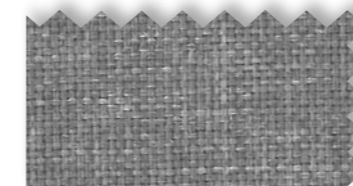
FA 136



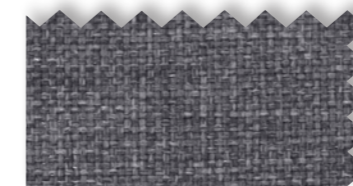
FA 137



FA 138



FA 141



FA 142

Categoria - Category

A

IVORY / SKY

100%PL - IDROREPELENTE



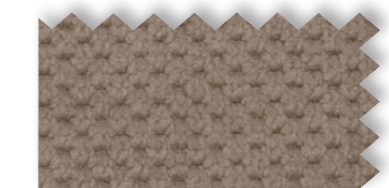
FA 123



FA 109



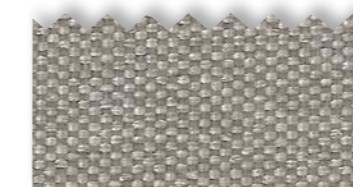
FA 125



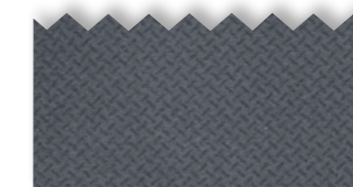
FA 130



FA 131



FA 112



FA 111

I colori e le finiture qui riportati devono ritenersi puramente indicativi. Per una visione realistica consultare il nostro campionario colori.

Colours and finishings shown here are merely indicative. Please see our colour samples book for a more realistic image. - Les coloris et les finitions sont présentés à titre purement indicatif. Pour un rendu réel, consulter notre échantillon.

TESSUTI
FABRICS
TISSUS

Categoria - Category

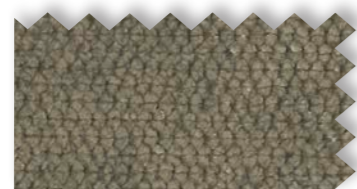
B

LONDRA

100%PL - IDROREPELENTE
ANTIMACCHIA



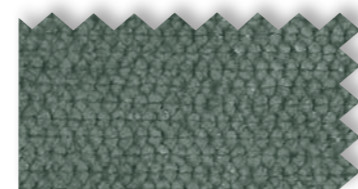
FB 2022



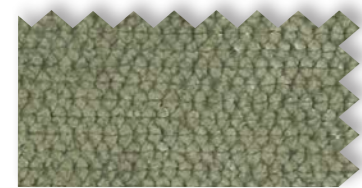
FB 2029



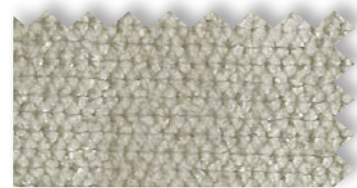
FB 2036



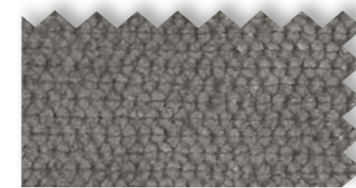
FB 2032



FB 2030



FB 2027



FB 2035



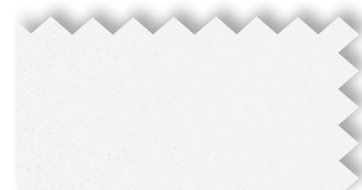
FB 2024

Categoria - Category

C

SALAMANCA

31%CO - 68%PVC - 1%PU
SOLIDITÀ LUCE / LIGHT FASTNESS 5/6
MARTINDALE 20.000



FC 102 Bianco



FC 112 Beige



FC 115 Gianduia



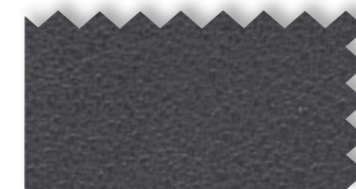
FC 116 Corteccia



FC 166 Avio



FC 182 Grigio tempesta



FC 186 Antracite



FC 188 Nero

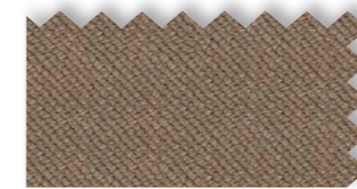
TESSUTI
FABRICS
TISSUS

Categoria - Category

C

STROPICCIO

VELLUTO TINTO IN PEZZA
100%PL - ANTIMACCHIA
MARTINDALE +100.000



FC 3001



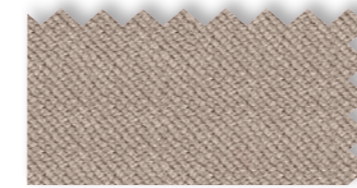
FC 3003



FC 3004



FC 3005



FC 3007



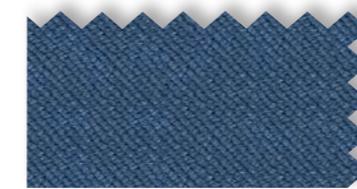
FC 3008



FC 3013



FC 3015



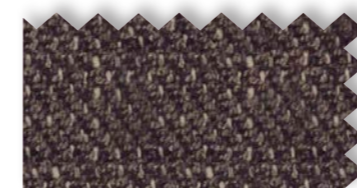
FC 3017

Categoria - Category

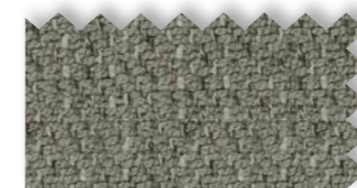
C

SOLE

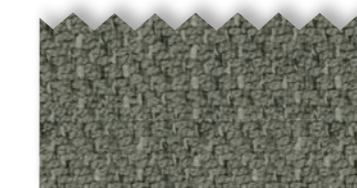
100%PL - ANTIMACCHIA



FC 3101



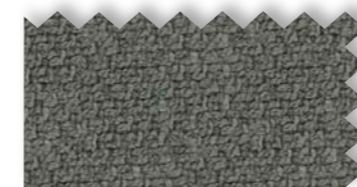
FC 3102



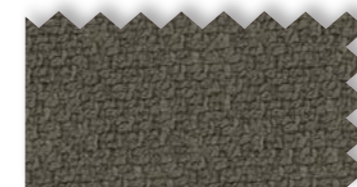
FC 3103



FC 3104



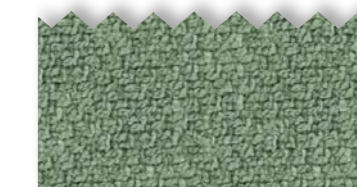
FC 3105



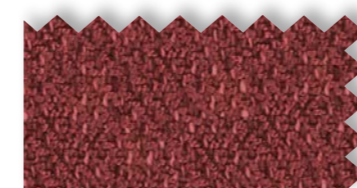
FC 3106



FC 3107



FC 3108



FC 3109

I colori e le finiture qui riportati devono ritenersi puramente indicativi. Per una visione realistica consultare il nostro campionario colori.

Colours and finishings shown here are merely indicative. Please see our colour samples book for a more realistic image. - Les coloris et les finitions sont présentés à titre purement indicatif. Pour un rendu réel, consulter notre échantillon.

I colori e le finiture qui riportati devono ritenersi puramente indicativi. Per una visione realistica consultare il nostro campionario colori.

Colours and finishings shown here are merely indicative. Please see our colour samples book for a more realistic image. - Les coloris et les finitions sont présentés à titre purement indicatif. Pour un rendu réel, consulter notre échantillon.

ARMADIATURE BATTENTI
WARDROBES WITH HINGED DOORS
ARMOIRES AVEC PORTES BATTANTES

| | | | DECORATIVI TINTA UNITA SOLID COLOR DECORATIVES DÉCORATIFS TEINTE UNIE | | | DECORATIVI ESSENZA WOOD-TYPE DECORATIVES DÉCORATIFS IMITATION DE BOIS | | | DECORATIVI ESSENZA WOOD-TYPE DECORATIVES DÉCORATIFS IMITATION DE BOIS | | | DEC. FIN. SPECIALI DECOR. SPECIAL FINISH DECOR. FIN. SPECIAUX | LACCATI LACQUERED LAQUÉES | | VETRI LACCATI LACQUERED GLASSES VERRES LAQUÉES | SPECCHI MIRRORS MIROIRS | SPACELAC SPACELAC | ECOPELLE ECO-LEATHER CUIR ÉCOLOG. | |
|---|--|-----------------------------|---|------------------|----------------------------|---|----------------------|--|---|----------------------|-----------------------|---|---------------------------------|---|--|--|----------------------------|---|---|
| | | | EXTRA-BIANCO M002 | CASHMERE M058 | GRIGIO TITANIO M082 NEW | ROV. MIELE M853 NEW | NOCE MALIZIA M846 | | ROV. CANYON M858 | TOBACCO WOOD M848 | POLAR WHITE M810 Δ | JUTA LAND M415 NEW | ACERO FOSSILE M864 | OPACO MET.OPACO MATT - METALLIC | LUCIDO GLOSSY BRILLANT | SU V. TRASPARENTE ON TRANSPARENT GLASS SUR VERRE TRANSPARENT | ARGENTATO BRONZATO-FUMÉ | NEW | Δ |
| STRUTTURA STRUCTURE STRUCTURE | FIANCHI TERMINALI FINISHING SIDES CÔTES DE FINITION | SP. 32 | LATO INTERNO INTERIOR SIDE - FACE INTERNE | ● | ● | | | | | ● | ● (Δ) | | | DECORATIVO T.U. - DEC. ESSENZA SOLID COLOR DECORATIVE - WOOD-TYPE DECORATIVE DÉCORATIF TEINTE UNIE - DEC. IMITATION DE BOIS | | | | | |
| | | SP. 32 SP. 16 (OPTIONAL) | LATO ESTERNO EXTERIOR SIDE - FACE EXTERNE | ● | ● | | | | | ● | ● (Δ) | | | ● | ● | | | | |
| | STRUTTURA INTERNA INTERNAL STRUCTURE STRUCTURE INTERNE | NOTA (A) | | ● | ● | | | | | ● | ● (Δ) | | | ● | | | | | |
| | CASSETTIERE CHESTS OF DRAWERS - COMMODES | | | ● | ● | | | | | ● | ● (Δ) | | | ● | | | | | |

NOTA (A) STRUTTURA INTERNA: BASI (sp.25) - COPERCHI (sp.25) - RIPIANI (sp.32) - TRAMEZZE (sp.32) - DIVISORI VERTICALI (sp.32) - SCHIENE (sp.6)
 INTERNAL STRUCTURE: BASES (sp.25) - TOPS (sp.25) - SHELVES (sp.32) - PARTITION (sp.32) - VERTICAL DIVIDERS (sp.32) - BACKS (sp.6)
 STRUCTURE INTERNE: BASES (sp.25) - PLAFONDS (sp.25) - ÉTAGÈRES (sp.32) - PLATEAUX DE SÉPARATION (sp.32) - DIVISIONS VERTICAUX (sp.32) - DOS (sp.6)

FACCIATA (LATO INTERNO IN FINITURA COME STRUTTURA INTERNA DELL'ARMADIO, ESCLUSO INTERNO ARMADIO IN ESSENZA, IN QUESTO CASO LE ANTE VENGONO LACCATE 2 LATI) - cerniere rallentate in chiusura DI SERIE
FRONTS (INTERNAL SIDE FINISHED AS INTERNAL STRUCTURE, EXCLUDING WARDROBE INTERIOR IN WOOD-TYPE DECORATIVE, IN THIS CASE DOORS ARE LACQUERED 2-SIDED) - with slow closing hinges as standard
FRONTS DE MODÈLE (CÔTÉ INTERNE FINI COMME STRUCTURE INTERNE, À L'EXCEPTION DE L'INTÉRIEUR DE L'ARMOIRE EN DÉCORATIFS IMITATION DE BOIS, DANS CE CAS LES PORTES SONT LAQUÉES SUR DEUX CÔTÉS) - avec charnières à fermeture lente en standard

| MODELLO | FRONTALI FRONT PANELS FAÇADES | SP. | | | | | | | | | | | | | | | | | |
|---------------|---|-------------------------|--|---|---|---|---|---|---|---|-------|---|---|---|---|---|---|---|-------|
| ARIA | FRONTALI FRONT PANELS FAÇADES MANIGLIA HANDLE POIGNÉE | SP. 25 | COMPRESA NEL PREZZO INCLUDED IN THE PRICE INCLUS DANS LE PRIX | ● | ● | ● | ● | ● | ● | ● | ● (Δ) | ● | ● | ● | ● | ● | ● | ● | ● |
| LINEA | FRONTALI FRONT PANELS FAÇADES PROFILO-MANIGLIA HANDLE-PROFILE PROFIL-POIGNÉE | SP. 25 | ALLUMINIO LACCATO OPACO IN TINTA MATT LACQUERED ALUMINIUM IN SAME COLOUR ALUMINIUM LAQUÉ MAT DE LA MÊME TEINTE | ● | ● | ● | ● | ● | ● | ● | ● (Δ) | ● | ● | ● | ● | ● | ● | ● | ● |
| DYLAN | FRONTALI FRONT PANELS FAÇADES SPECCHI - VETRI MIRRORS - GLASSES MIROIRS - VERRES MANIGLIA ALLUMINIO ALUMINIUM HANDLE POIGNÉE ALUMINIUM | SP. 25 SP. 4 | ANODIZZATO O LACCATO OP. IN TINTA ANODIZED, MATT LACQUERED IN SAME COLOUR ANODIZÉ, LAQUÉ MAT DE LA MÊME TEINTE | ● | ● | ● | ● | ● | ● | ● | ● (Δ) | ● | ● | ● | ● | ● | ● | ● | ● |
| PRESA | FRONTALI FRONT PANELS FAÇADES PROFILO-MANIGLIA HANDLE-PROFILE PROFIL-POIGNÉE INSERTO MANIGLIA HANDLE INSERT INSERT DE POIGNÉE | SP. 25 | ALLUMINIO LACCATO OPACO IN TINTA MATT LACQUERED ALUMINIUM IN SAME COLOUR ALUMINIUM LAQUÉ MAT DE LA MÊME TEINTE | ● | ● | ● | ● | ● | ● | ● | ● (Δ) | ● | ● | ● | ● | ● | ● | ● | ● |
| STEP | FRONTALI FRONT PANELS FAÇADES FASCIA LATERALE SIDE STRIP BANDE LATÉRALE PROFILO-MANIGLIA HANDLE-PROFILE PROFIL-POIGNÉE | SP. 25 SP. 20 | ALLUMINIO LACCATO OPACO IN TINTA MATT LACQUERED ALUMINIUM IN SAME COLOUR ALUMINIUM LAQUÉ MAT DE LA MÊME TEINTE | ● | ● | ● | ● | ● | ● | ● | ● (Δ) | ● | ● | ● | ● | ● | ● | ● | ● (Δ) |
| TRENDY | FRONTALI FRONT PANELS FAÇADES INSERTO ESTETICO AESTHETIC INSERT INSERT ESTHÉTIQUE PROFILO-MANIGLIA HANDLE-PROFILE PROFIL-POIGNÉE | SP. 25 | ALLUMINIO LACCATO OPACO IN TINTA MATT LACQUERED ALUMINIUM IN SAME COLOUR ALUMINIUM LAQUÉ MAT DE LA MÊME TEINTE | ● | ● | ● | ● | ● | ● | ● | ● (Δ) | ● | ● | ● | ● | ● | ● | ● | ● |
| AURORA | FRONTALI FRONT PANELS FAÇADES FASCIA CENTRALE CENTRAL STRIP BANDE CENTRALE PROFILO-MANIGLIA HANDLE-PROFILE PROFIL-POIGNÉE INSERTO MANIGLIA HANDLE INSERT INSERT DE POIGNÉE | SP. 25 SP. 25 H. 183 | ALLUMINIO LACCATO OPACO IN TINTA MATT LACQUERED ALUMINIUM IN SAME COLOUR ALUMINIUM LAQUÉ MAT DE LA MÊME TEINTE | ● | ● | ● | ● | ● | ● | ● | ● (Δ) | ● | ● | ● | ● | ● | ● | ● | ● |

| MANIGLIE Cat. A | MODELLO MODEL MODÈLE | COLORI COLOURS COULEURS | LUNGHEZZA LENGTH LONGUEUR | PASSO PITCH PAS |
|--------------------|----------------------------|---|---------------------------------|-----------------------|
| LUNA | METALLO | TITANIO TITANIUM - TITANE | L. 205 | mm 160 |
| | | | L. 330 | mm 320 |
| TEYLA | METALLO | TITANIO TITANIUM - TITANE | L. 169 | mm 160 |
| | | | L. 329 | mm 320 |
| STELO | LEGNO | LACCATO COLORI A CAMPIONARIO LACQUERED AS SAMPLE COLOURS LAQUÉ SELON LE ÉCHANTILLON | L. 200 | mm 160 |
| ERGO | LEGNO | LACCATO COLORI A CAMPIONARIO LACQUERED AS SAMPLE COLOURS LAQUÉ SELON LE ÉCHANTILLON | L. 180 | mm 160 |

| ANODIZZATO ANODIZED ANODISÉ | SPECCHI MIRRORS MIROIRS | VETRI TEMPERATI TEMPERED GLASSES VERRES TREMPÉES |
|---|--|--|
| FIN. BROWN BROWN FINISH FINITION MARRON | SP. ARGENTATO SILVERED MIRROR MIRROR ARGENT SP. BRONZATO BRONZED MIRROR MIRROR BRONZE SP. FUMÉ SMOKED MIRROR MIRROR FUMÉ | V. BRONZATO BRONZED GLASS VERRE BRONZE VETRO FUMÉ SMOKED GLASS VERRE FUMÉ STOPSOL CHIARO LIGHT STOPSOL STOPSOL CLAIR |

FACCIATA - FRONTS - FRONT

| MODELLO | FRONTALI FRONT PANELS FAÇADES | SP. | | | | | | | | | | | | | | | | | |
|-------------|--|-------|-------------------------------------|---|---|---|---|---|---|---|---|---|---|---|---|---|---|---|---|
| CHIC | MONTA CERNIERE 180° AMMORTIZ. EQUIPPED WITH 180° AMORTIZED HINGES ÉQUIPÉE DE CHARNIÈRES 180° AMORTI. | SP. 4 | ALLUMINIO ALUMINIUM ALUMINIUM | ● | ● | ● | ● | ● | ● | ● | ● | ● | ● | ● | ● | ● | ● | ● | ● |

ARMADIATURE SCORREVOLI
WARDROBES WITH SLIDING DOORS
ARMOIRES AVEC PORTES COULISSANTES

| STRUTTURA STRUCTURE STRUCTURE | FIANCHI TERMINALI FINISHING SIDES - CÔTES DE FINITION | SP. 32 | LATO INTERNO INTERIOR SIDE - FACE INTERNE | DECORATIVI TINTA UNITA SOLID COLOR DECORATIVES DÉCORATIFS TEINTE UNIE | | | DECORATIVI ESSENZA WOOD-TYPE DECORATIVES DÉCORATIFS IMITATION DE BOIS | | | DECORATIVI ESSENZA WOOD-TYPE DECORATIVES DÉCORATIFS IMITATION DE BOIS | | | DEC. FIN. SPECIALI DECOR. SPECIAL FINISH DECOR. FIN. SPECIAUX | LACCATI LACQUERED LAQUÉES | VETRI LACCATI LACQUERED GLASSES VERRES LAQUÉES | SPECCHI MIRRORS MIROIRS | VETRI EFFETTO GLASS EFFECT VERRES EFFECT | SPACELAC SPACELAC SPACELAC | ECOPELLE ECO-LEATHER CUIR ÉCOLOG. |
|---|--|--------|--|---|------------------|----------------------------|---|----------------------|---------------------|---|-----------------------|-----------------------|---|--------------------------------------|--|--|--|----------------------------------|---|
| | | | | EXTRA-BIANCO M002 | CASHMERE M058 | GRIGIO TITANIO M082 NEW | ROV. MIELE M853 NEW | NOCE MALIZIA M846 | ROV. CANYON M858 | TOBACCO WOOD M848 | POLAR WHITE M810 Δ | JUTA LAND M415 NEW | ACERO FOSSILE M864 | OPACO MET.OPACO MATT - METALLZ | LUCIDO GLOSSY BRILLANT | SU V. TRASPARENTE ON TRASPARENTE GLASS SUR VERRE TRANSPARENT | ARGENTATO BRONZATO-FUMÉ | MARMO MARBLE | PIETRA STONE PIERRE |
| STRUTTURA INTERNA INTERNAL STRUCTURE - STRUCTURE INTERNE | CASSETTIERE CHESTS OF DRAWERS - COMMODOES | | NOTA (A) | ● | ● | | ● | ● | | ● | ● | ● | ● | ● | | | | | |

NOTA (A) STRUTTURA INTERNA: BASI (sp.25) - COPERCHI (sp.25) - RIPIANI (sp.32) - TRAMEZZE (sp.32) - DIVISORI VERTICALI (sp.32) - SCHIENE (sp.6)
INTERNAL STRUCTURE: BASES (sp.25) - SHELVES (sp.25) - PARTITION (sp.32) - VERTICAL DIVIDERS (sp.32) - BACKS (sp.6)
STRUCTURE INTERNE: BASES (sp.25) - PLAFONDS (sp.25) - ÉTAGÈRES (sp.32) - PLATEAUX DE SÉPARATION (sp.32) - DIVISIONS VERTICAUX (sp.32) - DOS (sp.6)

COMPLETE DI AMMORTIZZATORE IN APERTURA E CHIUSURA
COMPLETE OF SHOCK ABSORBER MECHANISM IN OPENING AND CLOSING
COMPLÈTE DE AMORTISSEUR EN OUVERTURE ET FERMETURE

| | | | | | | | | | | | | | | | | | | | |
|---------|--|---|--------|----------|----------|---|---|---|---|-------|-------|---|---|---|---|---|---|---|-------|
| SLIDE | FRONTALI FRONT PANELS - FAÇADES | IN LEGNO TAMBURATO IN HONEYCOMB WOOD EN BEN OIS ALVÉOLÉ | SP. 28 | ● | ● | | | | | | | | | ● | ● | | | | |
| | MANIGLIA HANDLE POIGNÉE | Cat. A COMPRESA NEL PREZZO INCLUDED IN THE PRICE INCLUS DANS LES PRIX | | | | | | | | | | | | | | | | | |
| MIXER | FRONTALI FRONT PANELS - FAÇADES | IN LEGNO TAMBURATO IN HONEYCOMB WOOD EN BEN OIS ALVÉOLÉ | SP. 28 | ● | ● | | | | | | | | | ● | ● | | | | |
| | PROF. MANIGLIA HANDLE-PROFILE PROFIL-POIGNÉE | ALLUMINIO: LACCATO OPACO IN TINTA ALUMINIUM: MATT LACQUERED IN SAME COLOUR ALUMINIUM: LAQUE MAT DE LA MÊME TEINTE | | | | | | | | | | | | | | | | | |
| LINEA-S | FRONTALI FRONT PANELS - FAÇADES | IN LEGNO TAMBURATO IN HONEYCOMB WOOD EN BEN OIS ALVÉOLÉ | SP. 28 | ● | ● | | | | | | | | | ● | ● | | | ● | ● (Δ) |
| | FASCIA LATERALE SIDE STRIP - BANDE LATÉRALE | | SP. 20 | ● | ● | | | ● | ● | ● (Δ) | | | | ● | ● | | | | |
| | PROF. MANIGLIA HANDLE-PROFILE PROFIL-POIGNÉE | ALLUMINIO: LACCATO OPACO IN TINTA ALUMINIUM: MATT LACQUERED IN SAME COLOUR ALUMINIUM: LAQUE MAT DE LA MÊME TEINTE | | | | | | | | | | | | | | | | | |
| LIBERTY | FRONTALI FRONT PANELS - FAÇADES | IN LEGNO TAMBURATO IN HONEYCOMB WOOD EN BEN OIS ALVÉOLÉ | SP. 28 | ● | ● | | | | | | | | | ● | ● | | | | |
| | SPECCHI - VETRI MIRRORS / GLASSES - MIROIRS / VERRES | | SP. 4 | | | | | | | | | | | | ● | ● | | | |
| | PROF. MANIGLIA HANDLE-PROFILE PROFIL-POIGNÉE | ALLUMINIO: ANODIZZATO, LACCATO OPACO IN TINTA ALUMINIUM: ANODIZED - MATT LACQUERED IN SAME COLOUR ALUMINIUM: ANODIZÉ, LAQUE MAT DE LA MÊME TEINTE | | | | | | | | | | | | | | | | | |
| PRESA-S | FRONTALI FRONT PANELS - FAÇADES | IN LEGNO TAMBURATO IN HONEYCOMB WOOD EN BEN OIS ALVÉOLÉ | SP. 28 | ● | ● | | | | | | | | | ● | | | | | |
| | PROF. MANIGLIA HANDLE-PROFILE PROFIL-POIGNÉE | ALLUMINIO: LACCATO OPACO IN TINTA ALUMINIUM: MATT LACQUERED IN SAME COLOUR ALUMINIUM: LAQUE MAT DE LA MÊME TEINTE | | | | | | | | | | | | | | | | | |
| | INSERTO MANIGLIA HANDLE INSERT INSERT DE POIGNÉE | | | ● | ● | ● | ● | ● | ● | ● (Δ) | ● | ● | | | | | | | |
| AIDA | FRONTALI FRONT PANELS - FAÇADES | IN LEGNO TAMBURATO IN HONEYCOMB WOOD EN BEN OIS ALVÉOLÉ | SP. 28 | ● | ● | | | | | | | | | ● | | | | | |
| | PROF. MANIGLIA HANDLE-PROFILE PROFIL-POIGNÉE | ALLUMINIO: LACCATO OPACO IN TINTA ALUMINIUM: MATT LACQUERED IN SAME COLOUR ALUMINIUM: LAQUE MAT DE LA MÊME TEINTE | | | | | | | | | | | | | | | | | |
| BRECCIA | FRONTALI FRONT PANELS - FAÇADES | IN LEGNO TAMBURATO IN HONEYCOMB WOOD EN BEN OIS ALVÉOLÉ | SP. 28 | ● | ● | | | | | | | | | ● | | | | | |
| | PROF. DECORATIVI DECORATIVE PROFILES - PROFILS DÉCORATIFS | | | NOTA (B) | NOTA (B) | | | | | | | | | | | | | | |
| | PROF. MANIGLIA HANDLE-PROFILE PROFIL-POIGNÉE | ALLUMINIO: LACCATO OPACO IN TINTA ALUMINIUM: MATT LACQUERED IN SAME COLOUR ALUMINIUM: LAQUE MAT DE LA MÊME TEINTE | | | | | | | | | | | | | | | | | |
| DECOR | PANNELLO DI FONDO BOTTOM PANEL - PANNEAU DE FOND | IN LEGNO TAMBURATO IN HONEYCOMB WOOD EN BEN OIS ALVÉOLÉ | SP. 28 | ● | | | | | | | | | | | | | | | |
| | FASCE DECORATIVE DECORATIVE BANDS - BANDES DÉCORATIF | | SP. 3 | | | | ● | | ● | ● | ● (Δ) | | ● | | ● | | ● | | ● |
| | PROF. MANIGLIA HANDLE-PROFILE PROFIL-POIGNÉE | ALLUMINIO: LACCATO OPACO IN TINTA ALUMINIUM: MATT LACQUERED IN SAME COLOUR ALUMINIUM: LAQUE MAT DE LA MÊME TEINTE | | | | | | | | | | | | | | | | | |
| ELECTA | PANNELLO DI FONDO BOTTOM PANEL - PANNEAU DE FOND | IN LEGNO TAMBURATO IN HONEYCOMB WOOD EN BEN OIS ALVÉOLÉ | SP. 28 | ● | | | | | | | | | | | | | | | |
| | PANNELLI DECORATIVI DECORATIVE BANDS - BANDES DÉCORATIF | | SP. 3 | | | | ● | | ● | ● | ● (Δ) | | ● | | ● | | ● | | ● |
| | PROF. MANIGLIA HANDLE-PROFILE PROFIL-POIGNÉE | ALLUMINIO: LACCATO OPACO IN TINTA ALUMINIUM: MATT LACQUERED IN SAME COLOUR ALUMINIUM: LAQUE MAT DE LA MÊME TEINTE | | | | | | | | | | | | | | | | | |
| HELIX | FRONTALI FRONT PANELS - FAÇADES | | SP. 16 | ● | ● | ● | ● | ● | ● | ● (Δ) | ● | ● | ● | ● | ● | | | | |
| | FASCIA CENTRALE CENTRAL STRIP - BANDE CENTRALE | H.514 | SP. 16 | ● | ● | ● | ● | ● | ● | ● (Δ) | ● | ● | ● | ● | ● | | | ● | ● (Δ) |
| | PROF. MANIGLIA HANDLE-PROFILE PROFIL-POIGNÉE | ALLUMINIO: ANODIZZATO, LACCATO OPACO IN TINTA ALUMINIUM: ANODIZED - MATT LACQUERED IN SAME COLOUR ALUMINIUM: ANODIZÉ, LAQUE MAT DE LA MÊME TEINTE | | | | | | | | | | | | | | | | | |

COMPLETE DI AMMORTIZZATORE IN APERTURA E CHIUSURA
COMPLETE OF SHOCK ABSORBER MECHANISM IN OPENING AND CLOSING
COMPLÈTE DE AMORTISSEUR EN OUVERTURE ET FERMETURE

| IRIS | TELAIO FRAME - CADRE | ALLUMINIO LACCATO OPACO ALLUMINIO LACCATO OPACO METALLIZZATO MATT LACQUERED ALUMINIUM METALLIZED MATT LACQUERED ALUMINIUM ALUMINIUM LAQUE MAT ALUMINIUM LAQUE MAT MÉTALLISÉ | SP. 4 | VETRO TEMPERATO TEMPERED GLASS - VERRE TREMPÉ | | | SPECCHI MIRRORS - MIROIRS | | | CON PELLICOLA ANTI-FRANTUMAZIONE BIANCA WITH WHITE ANTI-CRUSHING FILM AVEC FILM ANTI-ÉCRASEMENT BLANC | | | | | | | | | |
|------|---------------------------|--|-------|--|--|--|---|---|--|---|---|---|---|---|---|--|--|--|--|
| | | | | V. BRONZATO BRONZED GLASS VERRE BRONZE | VETRO FUMÉ SMOKED GLASS VERRE FUMÉ | STOPSOL CHIARO LIGHT STOPSOL STOPSOL CLAIR | SP. ARGENTATO SILVERED MIRROR MIRROR ARGENT | SP. BRONZATO BRONZED MIRROR MIRROR BRONZE | SP. FUMÉ SMOKED MIRROR MIRROR FUMÉ | ● | ● | ● | ● | ● | ● | | | | |
| | VETRI GLASSES - VERRES | | | ● | ● | ● | | | | | | ● | ● | ● | | | | | |

MANIGLIA
Cat. A

| MODELLO MODEL MODÈLE | COLORI COLOURS COULEURS | LUNGHEZZA LENGTH LONGUEUR | PASSO PITCH PAS |
|----------------------------|---|---------------------------------|-----------------------|
| LUNA METALLO | TITANIO TITANIUM - TITANE | L. 205 L. 330 | mm 160 mm 320 |
| TEYLA METALLO | TITANIO TITANIUM - TITANE | L. 169 L. 329 | mm 160 mm 320 |
| STELO LEGNO | LACCATO COLORI A CAMPIONARIO LACQUERED AS SAMPLE COLOURS LAQUE SELON LE ÉCHANTILLON | L. 200 | mm 160 |
| ERGO LEGNO | LACCATO COLORI A CAMPIONARIO LACQUERED AS SAMPLE COLOURS LAQUE SELON LE ÉCHANTILLON | L. 180 | mm 160 |


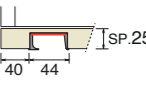


| | | | DECORATIVI TINTA UNITA SOLID COLOR DECORATIVES DÉCORATIFS TEINTE UNIE | | | DECORATIVI ESSENZA WOOD-TYPE DECORATIVES DÉCORATIFS IMITATION DE BOIS | | | DECORATIVI ESSENZA WOOD-TYPE DECORATIVES DÉCORATIFS IMITATION DE BOIS | | | DEC. FIN. SPECIALI DECOR. SPECIAL FINISH DECOR. FIN. SPECIAUX | LACCATI LACQUERED LAQUÉES | | VETRI LACCATI LACQUERED GLASSES VERRES LAQUÉES | SPECCHI MIRRORS MIROIRS | VETRI EFFETTO GLASS EFFECT VERRES EFFECT | SPACELAC SPACELAC SPACELAC | ECOPELLE ECO-LEATHER CUIR ÉCOLOG. | | |
|---|--|----------|---|------------------|----------------------------|---|----------------------|--|---|----------------------|-----------------------|---|---------------------------------|--|--|--|--|----------------------------------|---|-----|---|
| | | | EXTRA-BIANCO M002 | CASHMERE M058 | GRIGIO TITANIO M082 NEW | ROV. MIELE M853 NEW | NOCE MALIZIA M846 | | ROV. CANYON M858 | TOBACCO WOOD M848 | POLAR WHITE M810 Δ | JUTA LAND M415 NEW | ACERO FOSSILE M864 | OPACO MET.OPACO MATT - METALLIZ. | LUCIDO GLOSSY BRILLANT | SU V. TRASPARENTE ON TRANSPARENT GLASS SUR VERRE TRANSPARENT | ARGENTATO BRONZATO-FUMÉ | MARMO MARBLE MARBRE | PIETRA STONE PIÈRE | NEW | Δ |
| CABINA "OPEN-SPACE" WALK-IN CLOSET DRESSING | FIANCHI TERMINALI E DIVISORI END SIDES - DIVIDERS CÔTÉS TERMINALS ET DIVISIONS | SP 32 | ● | ● | | | ● | | ● | ● (Δ) | | | ● | | | | | | | | |
| | BASI - COPERCHI - RIPIANI - SCHIENE BASES - TOPS - SHELVES - BACKS BASES - PLAFONDS - ÉTAGÈRES - DOS | NOTA (A) | ● | ● | | | ● | | ● | ● (Δ) | | | ● | | | | | | | | |
| | CASSETTIERE CHESTS OF DRAWERS - CAISSONS | | ● | ● | | | ● | | ● | ● (Δ) | | | ● | | | | | | | | |
| CABINA "ALL-IN-ONE" WALK-IN CLOSET DRESSING | PANNELLI A MURO WALL PANELS PANNÉAUX AU MUR | SP 20 | ● | ● | | | ● | | ● | ● (Δ) | | ● | NOTA (C) | | | | | | | | |
| | BASI - COPERCHI - RIPIANI BASES - TOPS - SHELVES BASES - PLAFONDS - ÉTAGÈRES | SP 32 | ● | ● | | | ● | | ● | ● (Δ) | | | ● | | | | | | | | |
| | CASSETTIERE (coll. IMMAGINA GIORNO) CHESTS OF DRAWERS - CAISSONS | | ● | ● | ● | | ● | | ● | ● (Δ) | | | ● | | | | | | | | |

NOTA (A) STRUTTURA INTERNA: BASI (sp.32) - COPERCHI (sp.32) - RIPIANI (sp.32) - SCHIENE (sp.6)
INTERNAL STRUCTURE: BASES (sp.32) - TOPS (sp.32) - SHELVES (sp.32) - BACKS (sp.6)
STRUCTURE INTERNE: BASES (sp.32) - PLAFONDS (sp.32) - ÉTAGÈRES (sp.32) - DOS (sp.6)

LIVING
LIVING ROOM
SALON

| | | | DECORATIVI TINTA UNITA SOLID COLOR DECORATIVES DÉCORATIFS TEINTE UNIE | | | DECORATIVI ESSENZA WOOD-TYPE DECORATIVES DÉCORATIFS IMITATION DE BOIS | | | DECORATIVI ESSENZA WOOD-TYPE DECORATIVES DÉCORATIFS IMITATION DE BOIS | | | DEC. FIN. SPECIALI DECOR. SPECIAL FINISH DECOR. FIN. SPECIAUX | LACCATI LACQUERED LAQUÉES | | VETRI LACCATI LACQUERED GLASSES VERRES LAQUÉES | SPECCHI MIRRORS MIROIRS | VETRI EFFETTO GLASS EFFECT VERRES EFFECT | SPACELAC SPACELAC SPACELAC | ECOPELLE ECO-LEATHER CUIR ÉCOLOG. | | |
|-----------------------------------|--|-------|---|------------------|----------------------------|---|----------------------|--|---|----------------------|--|---|---------------------------------|--|--|--|--|----------------------------------|---|-----|---|
| | | | EXTRA-BIANCO M002 | CASHMERE M058 | GRIGIO TITANIO M082 NEW | ROV. MIELE M853 NEW | NOCE MALIZIA M846 | | ROV. CANYON M858 | TOBACCO WOOD M848 | | JUTA LAND M415 NEW | ACERO FOSSILE M864 | OPACO MET.OPACO MATT - METALLIZ. | LUCIDO GLOSSY BRILLANT | SU V. TRASPARENTE ON TRANSPARENT GLASS SUR VERRE TRANSPARENT | ARGENTATO BRONZATO-FUMÉ | MARMO MARBLE MARBRE | PIETRA STONE PIÈRE | NEW | Δ |
| PROGRAMMA PROGRAM PROGRAMME | INTERPARETE BOOKCASE - BIBLIOTHÈQUE | SP 32 | ● | ● | ● | | ● | | ● | | | | ● | NOTA (C) | | | | | | | |
| | CONTENITORI - STRUTTURA CONTAINERS - CONTENEURS | SP 16 | ● | ● | ● | | ● | | ● | | | | ● | ● | | | | | | | |
| | TOP FIANCHI TERMINALI TOPS - END SIDES DESSUS - CÔTÉS TERMINAL | SP 16 | ● | ● | ● | ● | ● | | ● | ● | | ● | ● | ● | ● | | | | ● | | |
| | TOP VETRO - FIANCHI TERM. VETRO GLASS TOPS - GLASS END SIDES DESSUS EN VERRE - CÔTÉS TERM. VERRE | SP 8 | | | | | | | | | | | | | | ● | | | ● | | |

FACCIATA PER MODELLO - MODEL FRONTS - FRONTS DE MODÈLE

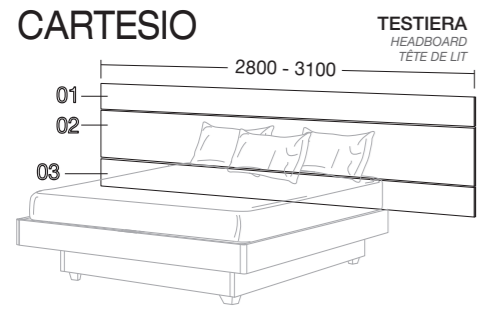
| | | | | | | | | | | | | | | | | | | | | | |
|----------|---|---|-------------|---|---|---|---|---|---|---|---|---|---|---|---|---|---|---|---|---|---|
| ALFA |  | FRONTALI FRONT PANELS - FAÇADE | SP 25 | ● | ● | ● | ● | ● | ● | ● | ● | ● | ● | ● | ● | ● | ● | ● | ● | ● | ● |
| | | APERTURA HANDLE - POIGNÉE | | | | | | | | | | | | | | | | | | | |
| PIXEL |  | FRONTALI FRONT PANELS - FAÇADE | SP 25 | ● | ● | ● | ● | ● | ● | ● | ● | ● | ● | ● | ● | ● | ● | ● | ● | ● | ● |
| | | PROF. MANIGLIA HANDLE-PROFILE PROFIL-POIGNÉE | | | | | | | | | | | | | | | | | | | |
| RIFLESSI |  | PANNELLO DI FONDO BOTTOM PANEL - PANNEAU DE FOND | SP 20 (NEW) | | | | | | | | | | | ● | | | | | | | |
| | | SPECCHI / VETRI MIRRORS / GLASSES - MIROIRS / VERRES | SP 4 | | | | | | | | | | | | | ● | ● | ● | | | |
| KERALA |  | FRONTALE FRONT PANEL - FAÇADE | SP 20 | | | | ● | | ● | | | | ● | | | | | | | | |
| | | PROFILI PROFILES - PERFILS | SP 5 | | | | ● | | ● | | | | ● | | | | | | | | |

| VERNICIATO VARNISHED VERNI | VETRO TEMPERATO TEMPERED GLASS VERRE TREMPÉ | | |
|---|--|--|--|
| FIN. CELTIC BROWN CELTIC BROWN FINISH FINITION CELTIC BROWN | V. EXTRACHIARO EXTRA-CLEAR GLASS VERRE EXTRA-CLAIR | V. BRONZATO BRONZED GLASS VERRE BRONZE | VETRO FUMÉ SMOKED GLASS VERRE FUMÉ |
| ● | ● | ● | ● |

| | | | |
|-----------------|---|---|------------------------------------|
| WAY - LIVING |  | TELAIO FRAME - CADRE | ALUMINIO ALUMINIUM ALUMINIUM |
| | | VETRI GLASSES - VERRES | SP 4 |
| | | APERTURA CON PRESA INTEGRATA SU TELAIO OPENING WITH INTEGRATED GRIP ON FRAME OUVERTURE AVEC PRISE DE MAIN INTEGRÉE AU CADRE | |

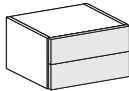
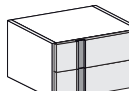
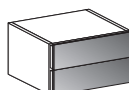
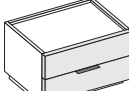
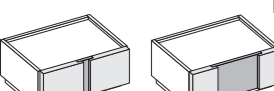
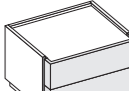
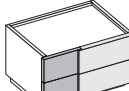
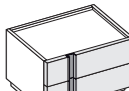

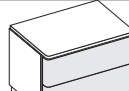
LETTI
BEDS
LITS

| | | | DECORATIVI TINTA UNITA SOLID COLOR DECORATIVES DÉCORATIFS TEINTE UNIE | | | DECORATIVI ESSENZA WOOD-TYPE DECORATIVES DÉCORATIFS IMITATION DE BOIS | | DECORATIVI ESSENZA WOOD-TYPE DECORATIVES DÉCORATIFS IMITATION DE BOIS | | | | DEC. FIN. SPECIALI DECOR. SPECIAL FINISH DÉCOR. FIN. SPÉCIAUX | | LACCATI LACQUERED LAQUÉES | | VETRI LACCATI LACQUERED GLASSES VERRES LAQUÉES | SPECCHI MIRRORS MIROIRS | VETRI EFFETTO GLASS EFFECT VERRES EFFECT | | SPACELAC SPACELAC SPACELAC | ECOPELLE ECO-LEATHER CUIR ÉCOLOG. | |
|---|--------------------------------------|---|---|------------------|----------------------------|---|----------------------|---|----------------------|-----------------------|-----------------------|---|--|---------------------------------|---|--|-------------------------------|--|-----|----------------------------------|---|-------|
| | | | EXTRA-BIANCO M002 | CASHMERE M058 | GRIGIO TITANIO M082 NEW | ROV. MIELE M853 NEW | NOCE MALIZIA M846 | ROV. CANYON M858 | TOBACCO WOOD M848 | POLAR WHITE M810 Δ | JUTA LAND M415 NEW | ACERO FOSSILE M864 | OPACO MET.OPACO MATT - METALLIZ. | LUCIDO GLOSSY BRILLANT | SU V. TRASPARENTE ON TRASPARENT GLASS SUR VÉRE TRASPARENT | ARGENTATO BRONZATO-FUMÉ | MARMO MARBLE MARBRE | PIETRA STONE PIÈRE | NEW | Δ | | |
| ECOBED | LEGNO | TESTIERA LEGNO WOODEN HEADBOARD - TÊTE DE LIT DE BOIS | SP. 32 | | | | | | | | | | | | | | | | | | | |
| | | GIROLETTO LEGNO WOODEN BEDFRAME - CADRE DE LIT DE BOIS | SP. 32 | • | • | | | | • | • | • (Δ) | | | • | | | | | | | | |
| EROS | LEGNO | TESTIERA LEGNO WOODEN HEADBOARD - TÊTE DE LIT DE BOIS | SP. 32 | • | • | | | | | | | | | | | | | | | | | |
| | | GIROLETTO LEGNO WOODEN BEDFRAME - CADRE DE LIT DE BOIS | SP. 32 | • | • | | | | • | • | • (Δ) | | | • | | | | | | | | |
| BLINE | LEGNO | TESTIERA LEGNO WOODEN HEADBOARD - TÊTE DE LIT DE BOIS | SP. 20 | | | | | | | | | | | | | | | | | | | |
| | | GIROLETTO LEGNO WOODEN BEDFRAME - CADRE DE LIT DE BOIS | SP. 32 | | | | | | • | • | • (Δ) | | | • | | | | | | | | |
| SMILE | LEGNO | TESTIERA LEGNO WOODEN HEADBOARD - TÊTE DE LIT DE BOIS | SP. 25 | | | | | | | | | | | | | | | | | | | |
| | | GIROLETTO LEGNO WOODEN BEDFRAME - CADRE DE LIT DE BOIS | SP. 32 | | | | | | • | • | • (Δ) | | | | | | | | | | | |
| STEP | LEGNO | TESTIERA LEGNO WOODEN HEADBOARD - TÊTE DE LIT DE BOIS | SP. 25 | • | • | | | | | | | | | | | | | | | | | |
| | | INSERTO TESTIERA HEADBOARD INSERT - INSERT TÊTE DE LIT | SP. 20 | • | • | | | | | | | | | | | | | | | | | • (Δ) |
| | | GIROLETTO LEGNO WOODEN BEDFRAME - CADRE DE LIT DE BOIS | SP. 32 | • | • | | | | | | | | | | | | | | | | | |
| VELA | MISTO | TESTIERA IMBOTTITA UPHOLSTERED HEADBOARD - TÊTE DE LIT REMBOURRÉE | VEDI CARTELLA TESSUTI SEE FABRIC SAMPLE CHART VOIR LES ÉCHANTILLONS DE TISSUS | | | | | | | | | | | | | | | | | | | |
| | | GIROLETTO LEGNO WOODEN BEDFRAME - CADRE DE LIT DE BOIS | SP. 32 | | | | | | | | | | | | | | | | | | | |
| MOSAICO | MISTO | TESTIERA IMBOTTITA UPHOLSTERED HEADBOARD - TÊTE DE LIT REMBOURRÉE | VEDI CARTELLA TESSUTI SEE FABRIC SAMPLE CHART VOIR LES ÉCHANTILLONS DE TISSUS | | | | | | | | | | | | | | | | | | | |
| | | TESTIERA LEGNO WOODEN HEADBOARD - TÊTE DE LIT DE BOIS | SP. 32 | • | • | | | | | | | | | | | | | | | | | |
| | | GIROLETTO LEGNO WOODEN BEDFRAME - CADRE DE LIT DE BOIS | SP. 32 | • | • | | | | | | | | | | | | | | | | | |
| HUG | MISTO | TESTIERA LEGNO WOODEN HEADBOARD - TÊTE DE LIT DE BOIS | SP. 32 | • | • | | | | | | | | | | | | | | | | | |
| | | PANNELLO IMBOTTITO UPHOLSTERED PANEL - PANNEAU REMBOURRÉE | VEDI CARTELLA TESSUTI SEE FABRIC SAMPLE CHART VOIR LES ÉCHANTILLONS DE TISSUS | | | | | | | | | | | | | | | | | | | |
| | | GIROLETTO LEGNO WOODEN BEDFRAME - CADRE DE LIT DE BOIS | SP. 32 | • | • | | | | | | | | | | | | | | | | | |
| POKER | MISTO | TESTIERA IMBOTTITA UPHOLSTERED HEADBOARD - TÊTE DE LIT REMBOURRÉE | VEDI CARTELLA TESSUTI SEE FABRIC SAMPLE CHART VOIR LES ÉCHANTILLONS DE TISSUS | | | | | | | | | | | | | | | | | | | |
| | | TESTIERA LEGNO WOODEN HEADBOARD - TÊTE DE LIT DE BOIS | SP. 32 | • | • | | | | | | | | | | | | | | | | | |
| | | GIROLETTO IMBOTTITO UPHOLSTERED BEDFRAME - CADRE DE LIT REMBOURRÉE | SP. 40 | • | • | | | | | | | | | | | | | | | | | |
| CLEO - DUKE - BEND ORIZZONTE - DIANA RUGIADA - VISION SNAP - ENJOY | IMBOTTITI | TESTIERA IMBOTTITA UPHOLSTERED HEADBOARD - TÊTE DE LIT REMBOURRÉE | VEDI CARTELLA TESSUTI SEE FABRIC SAMPLE CHART VOIR LES ÉCHANTILLONS DE TISSUS | | | | | | | | | | | | | | | | | | | |
| | | GIROLETTO IMBOTTITO UPHOLSTERED BEDFRAME - CADRE DE LIT REMBOURRÉE | SP. 40 | • | • | | | | | | | | | | | | | | | | | |
| CARTESIO | TESTIERA HEADBOARD TÊTE DE LIT | PANNELLO RETRO TESTIERA REAR HEADBOARD PANEL PANNEAU TÊTE DE LIT ARRIÈRE | SP. 20 | | • | | | | | | | | | | | | | | | | | |
| | | 01-03 PANNELLO H. 198 PANEL - PANNEAU | SP. 20 | • | • | | | | | | | | | • | • | | | | | | | |
| | | 02 PANNELLO H. 378 PANEL - PANNEAU | SP. 16 | • | • | • | • | • | | | | | | • | • | | | | | | | |
| | | 04 PERIMETRO ESTERNO EXTERNAL PERIMETER PÉRIMÈTRE EXTERNE | SP. 32 | | • | | | | | | | | | | | | | | | | | |
| | | 05 PERIMETRO INTERNO INTERNAL PERIMETER PÉRIMÈTRE INTERNE | SP. 32 | | • | | | | | | | | | | | | | | | | | |
| | | FONDO CASSONE E VASCHE BOTTOM OF THE CONTAINER AND TRAYS BAS DE CONTENEUR ET PLATEAUX | SP. 16 | | • | | | | | | | | | | | | | | | | | |



DISPONIBILE SOLO PER RETE DA 160x200 cm
AVAILABLE ONLY FOR FRAME 160x200 - DISPONIBILE SEULEMENTE POUR CADRE 160x200

GRUPPI LETTO
BEDSIDE CABINETS
ARMOIRES DE CHEVET

| | | | DECORATIVI TINTA UNITA SOLID COLOR DECORATIVES DÉCORATIFS TEINTE UNIE | | | DECORATIVI ESSENZA WOOD-TYPE DECORATIVES DÉCORATIFS IMITATION DE BOIS | | | DECORATIVI ESSENZA WOOD-TYPE DECORATIVES DÉCORATIFS IMITATION DE BOIS | | | DEC. FIN. SPECIALI DECOR. SPECIAL FINISH DECOR. FIN. SPÉCIAUX | LACCATI LACQUERED LAQUÉES | VETRI LACCATI LACQUERED GLASSES VERRES LAQUÉES | SPECCHI MIRRORS MIROIRS | VETRI EFFETTO GLASS EFFECT VERRES EFFECT | SPACELAC SPACELAC | ECOPELLE ECO-LEATHER CUIR ÉCOLOG. | | |
|--|---|---|--|------------------|----------------------------|---|----------------------|---------------------|---|-----------------------|-----------------------|---|--|--|---|--|----------------------|---|-------|---|
| | | | EXTRA-BIANCO M002 | CASHMERE M058 | GRIGIO TITANIO M082 NEW | ROV. MIELE M853 NEW | NOCE MALIZIA M846 | ROV. CANYON M858 | TOBACCO WOOD M848 | POLAR WHITE M810 Δ | JUTA LAND M415 NEW | ACERO FOSSILE M864 | OPACO MET. OPACO MATT - METALLIC | LUCIDO GLOSSY BRILLANT | SU V. TRASPARENTE ON TRASPARENT GLASS SUR VERRE TRANSPARENT | ARGENTATO BRONZATO-FUMÉ | MARMO MARBLE | PIETRA STONE PIÈRE | NEW | Δ |
| STRUTTURA STRUCTURE STRUCTURE | CONTENITORI CONTAINERS CONTENEURS | SP 16 | • | • | • | • | • | • | • | • (Δ) | | • | • | | | | | | | |
| MODELLI - MODELS - MODÈLE | | | | | | | | | | | | | | | | | | | | |
|  | SOCIAL | FRONTALE FRONT PANEL - FRONTAL | SP. 20 | • | • | | • | | | • (Δ) | | • | • | • | | | | | • | |
| | ESTRAZIONE PARZIALE * | APERTURA HANDLE - POIGNÉE | PUSH-PULL DI SERIE STANDARD - STANDARD MANIGLIA DISPONIBILE (CON MAGGIORAZIONE) AVAILABLE (WITH SURCHARGE) À DISPONIBLE (AVEC MAJORATION DE PRIX) | | | | | | | | | | | | | | | | | |
|  | VISION | FRONTALE FRONT PANEL - FRONTAL | SP. 20 | • | • | | • | | | • (Δ) | | • | • | | | | | | • | |
| | ESTRAZIONE PARZIALE * | PROFILO-MANIGLIA HANDLE-PROFILE PROFIL-POIGNÉE | ALLUMINIO LACCATO OPACO IN TINTA MATT LACQUERED ALUMINIUM IN SAME COLOUR ALUMINIUM LAQUÉ MAT DE LA MÊME TEINTE | | | | | | | | | | | | | | | | | |
| | | INSERTO MANIGLIA HANDLE INSERT INSERT DE POIGNÉE | | • | • | | • | | | • (Δ) | | • | | | | | | | | |
|  | RIFLESSI | PANNELLO DI FONDO BOTTOM PANEL - PANNEAU DE FOND | SP 20 | | | | | | | | | | • | | | | | | | |
| | ESTRAZIONE PARZIALE * | SPECCHI / VETRI MIRRORS / GLASSES - MIROIRS / VERRES | SP 4 | | | | | | | | | | | | • | • | • | | | |
| | | SENZA MANIGLIA HANDLE - POIGNÉE | APERTURA PUSH-PULL PUSH-PULL OPENING MECHANISM MECANISME D'OUVERTURE PUSH-PULL | | | | | | | | | | | | | | | | | |
|  | BEST | FRONTALE FRONT PANEL - FRONTAL | SP. 20 | • | • | • | • | | | • (Δ) | | • | • | • | | | | | • | |
| | ESTRAZIONE PARZIALE * OPTIONAL TOP VETRO *** | PRESA FRONTALE FINGER GRIP - PRISE DE MAIN | MANIGLIA "LINEA L.100" LACQUERED OPACO IN TINTA HANDLE "LINEA W.100" MATT LACQUERED IN SAME COLOUR POIGNÉE "LINEA L.100" LAQUÉ MAT DE LA MÊME TEINTE | | | | | | | | | | | | | | | | | |
|  | RIALTO | FRONTALE FRONT PANEL - FRONTAL | SP. 20 | • | • | | • | | | • (Δ) | | • | • | | | | | | | |
| | ESTRAZIONE PARZIALE * OPTIONAL TOP VETRO *** | INSERTO ESTETICO INSERT - INSERT | SP. 16 | • | • | • | • | | | • (Δ) | | • | • | | | | | | • (Δ) | |
| | | SENZA MANIGLIA WITHOUT HANDLE SANS POIGNÉE | PRESA FRONTALE FINGER GRIP - PRISE DE MAIN | | | | | | | | | | | | | | | | | |
|  | KALOS | FRONTALE IN FOLDING 90° FRONT PANEL IN FOLDING 90° FRONTAL EN FOLDING 90° | SP. 16 | • | • | • | • | | | • (Δ) | • | • | • | | | | | | • | |
| | ESTRAZIONE PARZIALE * OPTIONAL TOP VETRO *** | SENZA MANIGLIA WITHOUT HANDLE SANS POIGNÉE | PRESA LATERALE LACCATA IN TINTA LATERAL FINGER GRIP LACQUERED PRISE DE MAIN LATERAL, LAQUÉE | | | | | | | | | | | | | | | | | |
|  | INFINITO | FRONTALE FRONT PANEL - FRONTAL | SP. 28 | | | | • | | | • | | | • | | | | | | | |
| | ESTRAZIONE PARZIALE * OPTIONAL TOP VETRO *** | INSERTO INSERT - INSERT | SP. 20 | • | • | | • | | | • | | | • | • | | | | | | |
| | | SENZA MANIGLIA WITHOUT HANDLE SANS POIGNÉE | PRESA LATERALE LACCATA IN TINTA LATERAL FINGER GRIP LACQUERED PRISE DE MAIN LATERAL, LAQUÉE | | | | | | | | | | | | | | | | | |
|  | SEGNO | FRONTALE FRONT PANEL - FRONTAL | SP. 20 | • | • | | • | | | • (Δ) | | • | • | | | | | | • | |
| | ESTRAZIONE PARZIALE * OPTIONAL TOP VETRO *** | PROFILO-MANIGLIA HANDLE-PROFILE PROFIL-POIGNÉE | ALLUMINIO LACCATO OPACO IN TINTA MATT LACQUERED ALUMINIUM IN SAME COLOUR ALUMINIUM LAQUÉ MAT DE LA MÊME TEINTE | | | | | | | | | | | | | | | | | |
| | | INSERTO MANIGLIA HANDLE INSERT INSERT DE POIGNÉE | | • | • | | • | | | • (Δ) | | • | | | | | | | | |
|  | BOMBAY | FRONTALE FRONT PANEL - FRONTAL | SP. 28 | | | | • | | | • | | | • | | | | | | | |
| | ESTRAZIONE PARZIALE * | INSERTO INSERT - INSERT | SP. 20 | • | • | | • | | | • | | | • | • | | | | | | |
| | | SENZA MANIGLIA WITHOUT HANDLE SANS POIGNÉE | PRESA LATERALE LATERAL FINGER GRIP PRISE DE MAIN LATERAL | | | | | | | | | | | | | | | | | |
|  | DEDALO | FRONTALE IN FOLDING RAGGIATO ROUNDED FRONT PANEL IN FOLDING FRONTAL EN FOLDING ARRONDI | SP. 16 | | | | • | | | • | | | • | | | | | | | |
| | ESTRAZIONE PARZIALE * | SENZA MANIGLIA WITHOUT HANDLE SANS POIGNÉE | PRESA LATERALE LATERAL FINGER GRIP PRISE DE MAIN LATERAL | | | | | | | | | | | | | | | | | |
| OPTIONALS: | MOD. SOCIAL - VISION - RIFLESSI | TOP VASCHETTA AL ML. TRAY TOP PER LM PLATEAU SUPÉRIEUR À ML. | SP. 16 H. 48 P. 487 - 611 | • | • | • | • | | | • (Δ) | | • | • | | | | | | | |
| | MOD. SOCIAL - VISION - RIFLESSI MOD. BEST - RIALTO - SEGNO | FIANCONE SIDE PANEL - CADRE | SP. 32+10 | • | • | • | • | | | • (Δ) | | • | • | | | | | | | |
| *** OPTIONAL TOP VETRO | | IN VETRO TRASPARENTE TRANSPARENT GLASS EN VERRE TRANSPARENT | SP. 3 | | | | | | | | | | | • | | | | | | |
| | | SPECCHIO MIRROR MIROIR | SP. 4 | | | | | | | | | | | | | • | | | | |



Faverero

CIG srl

via Castello, 98 - 31020 Sernaglia della Battaglia (TV - Italy)

Tel.: +39 0438 966222 - Fax: +39 0438 966 380

info@faveromobili.it / www.faveromobili.it